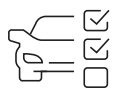


# Volkswagen Passat

VIN: 1VWBN7A35CCXXXXXX

2014



**Purpose**



**Odometer**



**Financial and legal status**



**Title check**



**Damage**



## Data sources



+31

We checked 900+ data sources in **35 countries**



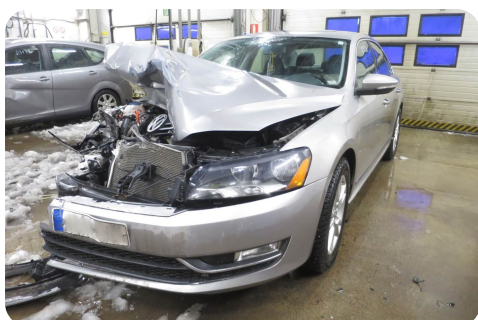
## Partners

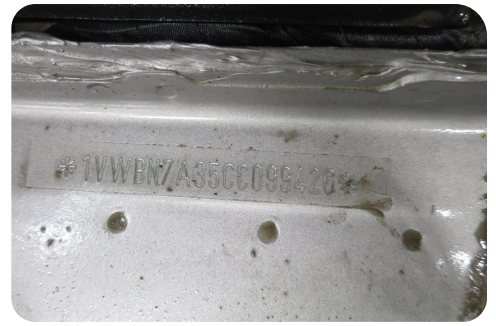
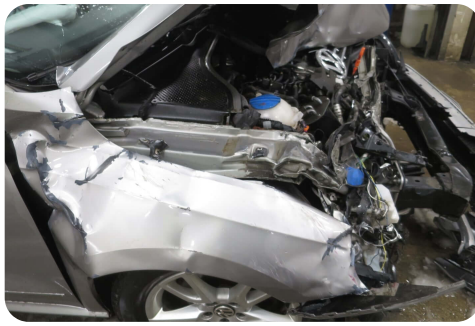
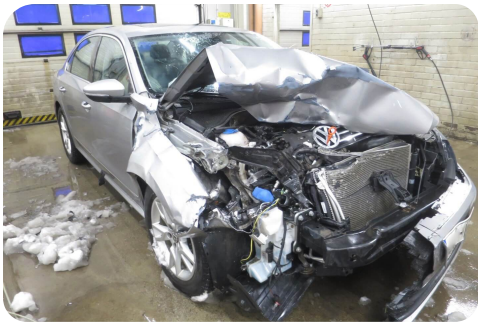
Fuelling this report

## Photos

**2017-04**

8 photos





# Purpose

Was the vehicle used as a taxi, rental, or other service vehicle? Note: such vehicles may be in worse condition than usual!



Vehicle was used as a rental!

## Here's what we checked:



### Rental

 **Record found**

Rental vehicle



### Taxi

✓ No record found

No evidence of being used as a taxi



### Transport

✓ No record found

No evidence of being used as a transport vehicle



### Police

✓ No record found

No evidence of being used by police



### Handicap

✓ No record found

No evidence of being used as a handicap vehicle



### Driving school vehicle

✓ No record found

No evidence of being used as a driving school vehicle

## Odometer

Are there signs of mileage rollbacks or discrepancies?



This vehicle may have a fake mileage!




Last known mileage: 145,000 mi

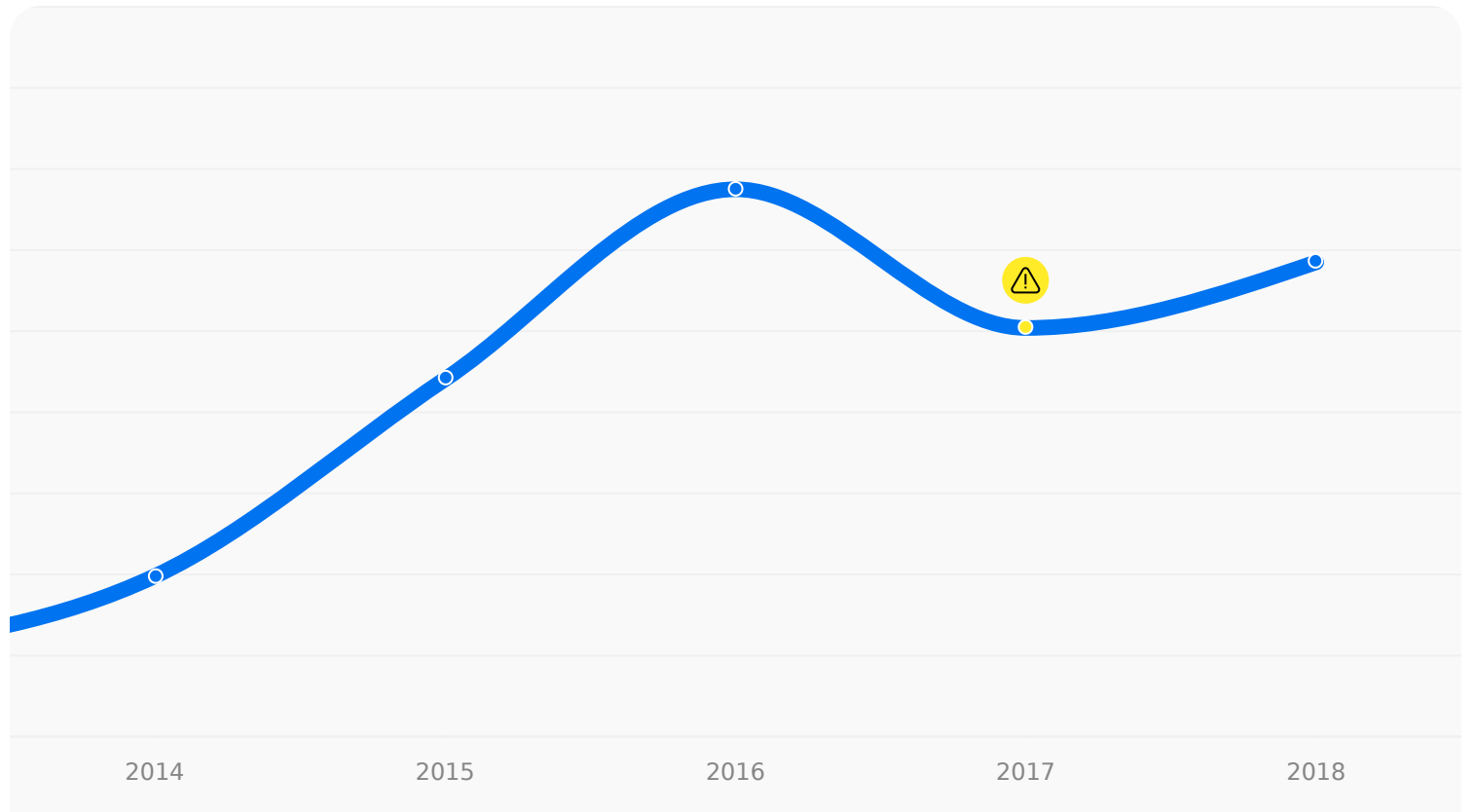


Average mileage for similar models: 104,200 mi



5 mileage records found

 Rollback



#### Odometer records

2014-01 **102,000 mi**

2015-01 **129,000 mi**

2016-02 **155,000 mi**

2017-12 **136,000 mi**

 **Odometer Rollback**

2018-09 **145,000 mi**

## Financial and legal status

Has the vehicle passed its technical inspections? Does it have property rights restrictions or outstanding loans?



Tech inspection passed 2017-02 in  **United States**

### Legal



### Technical inspection (also known as MOT)

**Passed** 2017-02

 **United States**

Has successfully passed  
technical inspection



### Scrap

✓ No record found

No record that vehicle was  
marked as scrapped



### Exported

✓ No record found

No export records found



### Imported

✓ No record found

No import records found

## Financial restrictions



### Lease

✓ No record found

No data available on  
outstanding loan or  
finance agreement



### Operating-lease

✓ No record found

No record of vehicle being  
on an operating-lease



### Unit-stocking

✓ No record found

No record of vehicle being  
under unit-stocking  
finance

# Title check

This report has been prepared in cooperation with The National Motor Vehicle Title Information System



No issues found

## Title brands

## Junk

✓ No record found

## Fire

✓ No record found

## Flood

✓ No record found

## Salvage

✓ No record found

## Hail

✓ No record found

## Lemon

✓ No record found

**58 Title brands** were checked

## Odometer brands

### Actual

✓ No record found

### Not Actual

✓ No record found

### Exceeds Mechanical Limits

✓ No record found

### Maybe Altered

✓ No record found

### Tampering

✓ No record found

### Exempt Odometer Disclosure

✓ No record found

**11 Odometer brands** were checked

! The certificate of title (also known as a “car title”) is a legal document that establishes ownership of a vehicle in the United States. Vehicle titles are “branded” to note certain events in a vehicle’s history, such as various types of damage, mileage rollbacks, warranty events, and more.

## Damage

Has this vehicle been damaged in the past? What was the value of the damages?

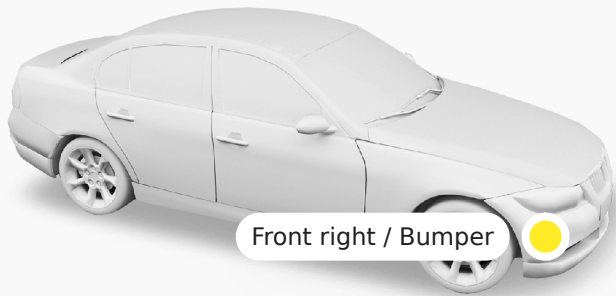


This vehicle was damaged 2 times!




Mild damages normally won't impact a vehicle's safety or leave structural issues

## Damage records



### Damage

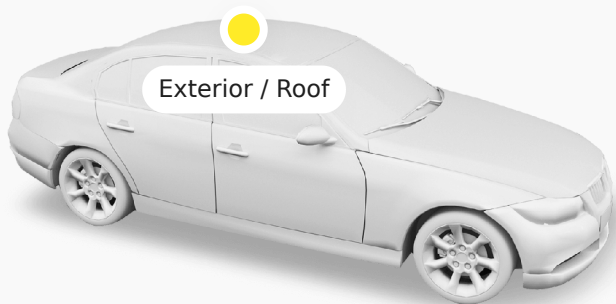
 2018-03

Estimated Repair Cost


**\$3,001 - \$5,000**

Possible Damage Cause

**Unknown**



### Damage

 2016-01

Estimated Repair Cost

**\$15,001 - \$20,000**

Possible Damage Cause

**Unknown**

## Specs & equipment

What specs and equipment are on record for this vehicle?



Check whether the specs and equipment of this vehicle match the facts given by the seller.

## Identification and technical specifications



Make

**Volkswagen**



Model

**Passat**



Body type

**Sedan**



Manufacture year  
**2014**



Powertrain displacement  
**2 L**



Powertrain power  
**103 kW (138 hp)**



Transmission type  
**Automatic**



Plant location  
**United States**

## Equipment

**E0A**

Special editions

**No special edition**

**0DI**

Vehicle class differentiation units/platform components

**Vehicle class differentiation -360-**

**1D0**

Trailer hitch

**Without trailer hitch**

**1E1**

Activated carbon canister

**Activated carbon canister**

**6XU**

Exterior mirrors

**automatically dimming, electrically adjustable, separately heated**

**5SL**

Left exterior mirror

**aspherical**

**1X0**

Drive layout

**Front wheel drive**

**A8B**

Equipment levels

**Basic equipment**

**J0L**

**1PA**

Lockable wheel bolts

**Standard wheel bolts**

**7MG**

Emissions standard

**Emission standard EU5**

**4UE**

Airbag

**Air bag for driver and front seat passenger**

**8ZH**

Antennas

**Antenna for AM/FM reception, "diversity"**

**EA0**

Follow-on warranty

**Without subsequent warranty**

**5RQ**

Right exterior mirror

**convex**

**9WL**

"Multimedia", video/DVD/notebook connection

**Multimedia socket for external audio source**

**1KW**

Brake type in rear

**Disc brakes, rear**

**1ZM**



Batteries

**Battery 340 A (70 Ah)**

4M3

Beverage holders

**Cup holder**

B0A

Component part sets with country-specific design requirements

**Component parts set without country-specific design requirement**

1AT

Brake systems

**Electronic stabilization program (ESP)**

9Z0

Operating voltage

**Operating voltage 12V**

7QA

CD ROM/DVD/SD card

**Without CD/DVD for navigation**

2H0

Charism

**Without “drive select”**

C26

General operating permit, alterations

**Operating permit, alteration**

3FA

Roof insert/convertible top

**Without roof insert (standard roof)**

G07

Suspension system in front

**Front shock absorption**

2G1

Insert for the filling up of unleaded fuel/fuel type

**Insert for the filling up of unleaded fuel**

Brake type, front

**Disc brakes, front (Geomet D)**

NY0

Battery/alternator capacity

**Standard battery/alternator capacity**

1S1

Tool kit and jack

**Tool kit and jack**

0XR

Owner's manuals

**Information kit in Lithuanian**

9T0

Heated washer nozzles

**Without heated washer nozzles**

7A0

CD changer/CD player

**Without CD changer/CD player**

QJ1

Chrome package

**Chrome work package**

3S0

Roof rails/roof load rack

**Without roof rails/roof load rack**

1JA

Suspension system in rear

**Rear shock absorption, basic design 1**

3X0

Ski bag

**Without load-through provision**

0EM

Installation differentiation for vehicle components

**Installation differentiation for transmission MQ 200 vehicle components**

7AL

Theft protection system

**Anti-theft alarm system, passenger compartment control, backup horn and towing protection**

7M0

Scuff plates

**Plastic scuff plates in door apertures**

UF0

Electric interface for external use

**Without electric interface**

6A0

Fire extinguishers

**Without fire extinguisher**

8K3

Headlight control

**Separate daytime running lights with low beam assistant and "Coming Home" feature**

7G0

Vehicle tracing system

**Without preparation for VTS (vehicle tracking system)**

8GG

Alternators

**Alternator 110 A**

0YC

Weight category rear axle

**Weight range 3 installation control only, no requirement forecast**

TU0

Base engine

**4-cylinder gasoline engine 1.4 L unit 03C.K**

8T0

Cruise control system

**Without cruise control system (CCS)**

7TM

Inserts

**Decorative inserts**

7X0

Park distance control

**Without park distance control**

0FG

Manufacturing sequence differentiation

**Mosel manufacturing sequence**

VF0

Pedal cluster

**Standard pedal cluster**

UH2

Parking brake

**Parking brake**

F0A

Vehicle specifications

**No special purpose vehicle, standard equipment**

0G4

Transmission types/gearshift mechanisms

**Cable gearshift**

L01

Weight category front axle

**Suspension range 01 installation control only, no requirement forecast**

6M0

Tie down straps/net/pocket

**Without tie down straps/net/pocket**

VC0

Garage door opener

**W/o remote-controlled garage door opener**

G0K

Transmission specifications

**6-speed manual transmission**

3P1

Brackets

**Bracket for first aid kit and warning triangle**

KH6

Heating and air conditioning system

**Electronically controlled air conditioning system**

FC0

Customized installation

**Without customized installation**

U5A

Instrument clusters

**Instrument insert, km/h speedometer**

K8B

Body style

**Notchback**

6SE

Luggage compartment floor covering

**Flat needle-punched trunk floor covering**

QA0

Child seats

**Without child seat**

QR0

Compass/road sign display

**Without compass/traffic sign display/ traffic signs recognition**

3Q6

Rear head restraints

**Three rear headrests**

1Z0

6Y9

Cruise control system and speed limiter

**W/o cruise control speed limit system**

3NU

Rear seats

**Rear seat bench unsplit, backrest split folding with center armrest**

8ID

Headlamps

**Halogen twin headlights**

6T0

Interior light in footwell

**Without interior light in footwell**

4L6

Breakaway interior rearview mirror

**Breakaway interior rear view mirror, automatically dimming**

QK0

Camera/distance sensor

**Without camera without distance sensor (driver assistance system)**

4W0

Cassette and CD storage unit

**Without cassette and CD storage unit**

0Y3

Climatic zones

**Cold zones**

4D0

Seat ventilation/massage seat

**Without seat ventilation/massage seat**

5ZJ

Head restraints

**Front headrests**

1A2

Fuel quantity for initial filling

**Initial standard fuel filling**

5C0

Body measures

**Without special body measures**

6P1

Rear license plate carrier

**License plate bracket rear (ECE)**

5K7

Paint preservative/transit coating

**Transport protection film (minimum protection) with additional transport protection measures**

FE0

Country codes

**Without country code (no DVD player in vehicle)**

8S7

Reading light

**Two reading lights front**

3H0

Backrest release

**Without backrest release for front seats**

2P1

Loading edge protection

**Plastic trunk sill protection**

1MR

Steering wheels

**Leather steering wheel**

8RM

Speaker installation

**8 speakers (passive)**

6E3

Center armrest

Fuel systems

**Fuel system for SI engine with direct injection (FSI)**

6KJ

Radiator grille

**Radiator grille with chrome-plated strip**

6W1

Front license plate carrier

**License plate bracket front (large)**

3GA

Rear luggage/load compartment floor

**Without cargo area**

L0L

Steering system arrangement

**Left-hand drive vehicle**

1N3

Steering

**Speed-related variable steering assist (Servotronic)**

8G0

Light control systems

**Without light assistant**

7P0

Lumbar support

**Without lumbar support in seat backrests**

AV1

Driving on the left/on the right

**Driving on the right**

8Q1

Headlight range control

**Headlight-range adjustment**

9Q5

Multi-function display/trip computer

## Front center armrest

3I5

Center console

## Center console

8Z5

Engine cooling system

## Not hot country

4SG

Left vanity mirror

## Left vanity mirror illuminated extractable sun visor

7Q0

Navigation device

## Without navigation device

8WA

Front fog lamp/additional headlamp

## Without front fog light

CZ0

Wheels

## Steel wheels 6.5J x 16 with optimized weight

9JA

Smoker's/non-smoker's package

## Non-smoking package

NS0

Umbrella

## Without umbrella(s)

V0A

Tire suppliers

## Tires w/o specification of tire brand

3QT

Restraint systems, front

## Multi-function display with control

EM0

Driver alert system

## Without Rest Assist

D4X

Engine specifications

## 4-cyl. gasoline engine 1.4 l/90 kW TSI Base engine is TU0/TL1/TL8/T9B

4TL

Right vanity mirror

## Vanity mirror, right, illuminated extractable sun visor

8TC

Rear fog lamp

## Rear fog light for driving on the right

1NH

Wheel covers

## Full wheel covers

8AE

Radios

## Radio "RCD310 MP3"

7K6

Direct tire pressure monitoring system

## Flat tire indicator

H2F

Tires

## Tires 205/55 R16 91H super-optimized rolling resistance

1G2

Spare wheel/breakdown kit

## Steel spare wheel with original equipment tires

PA1

Leather steering wheel (3-spoke) with decorative aluminum inserts

**3-point seat belts with tensioner and height adjustment, front**

WD4

Anti-theft alarm system "Plus"

**True**

4X3

Side airbag

**Side air bag front with curtain air bag**

2SB

Special labels/plates

**Labels/plates in Polish, Estonian, Latvian, Lithuanian, Slovenian**

4E2

Lock operation for tailgate/trunk lid

**Tailgate/trunk lid release from inside (electrically)**

3SB

Front seat, right

**Standard seat, front right**

3ZB

Outer rear seat belts

**3-point seat belts, outer rear with ECE label**

N4C

Seat trim covers

**Fabric seat covering**

4A0

Seat heater

**Without seat heater**

8Y1

Horns

**Two-tone horn**

7Y0

Lane change assist/lane keeping system

**Without lane change assistant**

**True**

WFA

Family package, Passat station wagon, Sweden

**True**

6Q2

Gearshift knob/handle

**Leather gearshift knob/handle**

8SG

Rear combination lamps

**Standard taillight assemblies (type 2)**

3TB

Front seat, left

**Standard seat, front left**

9P1

Seat belt check

**Seat belt reminder, electric contact in buckle**

3C7

Center rear seat belts

**3-point seat belt for center rear seat**

3L3

Seat adjustment

**Manual height adjustment for front seats**

7L3

Start-stop system/regenerative braking

**Without start/stop system without regenerative braking**

QH0

Audio-response system/voice control

**Without voice control**

4KC

Side and rear windows

4B1

Protective side molding

**Protective side molding**

7B6

Socket

**12-volt socket(s)**

QNO

Drawers under front seats

**Without drawers under front seats**

8N3

Windshield wiper intermittent control/ light/rain sensor

**Windshield wiper intermittent control with rain sensor**

0NB

Nameplate set

**Nameplate set in base trim**

1Q0

Mass damper for steering wheels

**Without mass damper for steering wheel**

B47

Type approval countries/countries with special requirements

**Type approval the Baltic States**

3CA

Partition

**Without partition**

3LC

Door and side trim panels

**Door and side trim panel in foam film and woven fabric**

1VG

**Side and rear windows in heat-insulating glass**

3Y0

Roll-up sun screen for rear and side windows

**Without roll-up sun screen**

2JB

Bumpers

**Standard bumpers**

8X0

Headlamp washer system

**Without headlight washer system**

3M0

Special registration measures

**Without special measures**

9A0

Special alarm systems

**Without taxi alarm system**

4K3

Door and lid locking system

**Radio remote controlled central locking operated from inside and safe securing**

5D1

Carrier frequency for radio remote control

**Carrier frequency 433.92 MHz-434.42 Mhz**

NT0

Transit coating

**Transit coating (type 1)**

QV0

TV reception/digital radio reception

**W/o TV reception/digital radio reception**

1SA

Front underbody guard

Installation parts for engine (engine mount system)

### **Installation parts for four-cylinder engine**

1EX

Identification plates

### **Special identification plate for EC for M1 passenger vehicle**

1T2

First aid kit / warning triangle

### **Warning triangle**

9F0

Preparation for sound combination for rotating beacon

### **Without sound combination for rotating emergency light and radio antenna preparation**

9TC

Additional warning lights

### **Additional reflectors (door area)**

7E0

Heat accumulator system/auxiliary heater

### **W/o heat accumulator/auxiliary heating**

8FA

Second battery/battery installation

### **Without second battery**

0TA

Floor mats

### **Without floor mats**

3B4

Additional child seat anchors

### **Child seat anchor for child seat system ISOFIX**

UP0

Clocks

### **Analog clock**

### **Without additional front underbody guard**

2A0

Delivery equipment

### **Without delivery equipment**

9D0

Preparation for two-way radio installation

### **Without preparation for two-way radio installation**

9W0

Telephone / telematics

### **W/o car phone preparation/installation**

QG1

Service interval prolongation

### **Service interval prolongation**

4GF

Windshield glass type

### **Windshield in heat-insulating glass**

2WA

Additional tires (snow tires)

### **Without additional tires**

4ZE

Decorative trims

### **Black moldings**

9M0

Auxiliary heater

### **Without auxiliary/parking heater**



# Timeline

5 records found

The timeline of records for this vehicle

## Records

2014-01

 **United States**



### Was on sale

This record was created because the vehicle was listed for sale on a certain marketplace. Sometimes the vendor's country (or state) overwrites the vehicle's actual location.

2014-02

 **United States**



### Was on sale

This record was created because the vehicle was listed for sale on a certain marketplace. Sometimes the vendor's country (or state) overwrites the vehicle's actual location.

2017-02

 **United States**



### Was inspected

A technical inspection event (also known as an MOT, roadworthiness test, or emission control test) has been recorded. Both successful and failed instances may be included.

2017-11

 **Canada**



### Was on sale

This record was created because the vehicle was listed for sale on a certain marketplace. Sometimes the vendor's country (or state) overwrites the vehicle's actual location.

2018-03

 **Canada**



### Damage detected

We have indications that this vehicle was recognised as damaged in this particular country (or state). Please refer to the "Damage" section for details.



**+31** We checked 900+ data sources in **35 countries**



**Partners**  
Fuelling this report